

# SEACURTAIN™

**KEPNER PLASTICS**  
**FABRICATORS, INC.**

## STANDARD FOAM-FILLED BOOMS



### THE MOST PROVEN PRODUCT IN OIL SPILL CONTAINMENT

THE ONLY BOOM WITH CONTINUOUS ACCEPTANCE AND SERVICE FOR OVER 25 YEARS WITHOUT MAJOR MODIFICATION

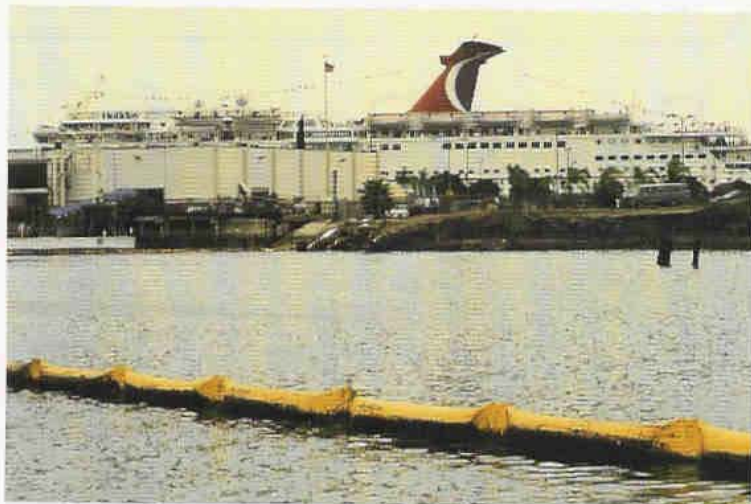
#### PROVEN CONSTRUCTION

- 100% RF WELDED SEAMS FOR MAXIMUM SEAM STRENGTH & RELIABILITY
- LIGHTWEIGHT, FULL FOAM-FILLED FLOTATION
- FLEXIBLE, CYLINDRICAL DESIGN FOR CONSTANT FREEBOARD AND HIGH BUOYANCY
- CONTINUOUS BOTTOM TENSION FOR BEST PERFORMANCE

#### PROVEN PERFORMANCE

- STRENGTH AND RELIABILITY SURPASS ALL OTHERS
- CONSTANT FREEBOARD REGARDLESS OF WIND AND SWELLS
- CONFORMANCE TO WAVE SURFACE MOTION
- HIGH RESERVE BUOYANCY FOR RAPID HEAVE RESPONSE

# SEACURTAIN™ STANDARD FOAM-FILLED BOOM



## Specifications

Boom Service	Model Number	Float Diameter	Nominal Freeboard	Nominal Draft	Gross Tensile Strength	Weight/ft (m)
Pond	BLD1.50406EF	1.5" (4cm)	1.25" (3cm)	4.25" (11cm)	3,000 lbs (1,365kg)	.25 lbs (0.11kg)
Lake	BLD4608RF	4" (10cm)	3.5" (9cm)	6.5" (16.5cm)	12,400 lbs (5,640kg)	1.2 lbs (0.54kg)
Stream	BLD5808RF	5" (13cm)	4" (10cm)	9" (23cm)	14,500 lbs (6,590kg)	1.4 lbs (0.64kg)
River	BHD61208RF	6" (15cm)	5" (13cm)	13" (33cm)	19,300 lbs (8,770kg)	1.6 lbs (0.73kg)
Harbor	BHD81208RF	8" (20cm)	7" (18cm)	13" (33cm)	21,900 lbs (9,955kg)	1.8 lbs (0.82kg)
Outer Harbor	BHD101608RF	10" (25cm)	9" (23cm)	17" (43cm)	28,600 lbs (13,000kg)	2.8 lbs (1.2kg)
Light Ocean	BHD122408RF	12" (31cm)	11" (28cm)	25" (64cm)	34,300 lbs (15,590kg)	3.2 lbs (1.4kg)
Ocean	BHD141808RF	14" (36cm)	13" (32cm)	19" (48cm)	37,400 lbs (17,000kg)	3.5 lbs (1.6kg)
Offshore	BHD182508RF	18" (46cm)	16" (41cm)	27" (68cm)	44,000 lbs (20,000kg)	4.5 lbs (2.04kg)

Above values are standard for models shown. Alternative models are available upon request.

- Section Length:** Standard lengths are 50ft (15m) and 100ft (30m).
- Materials:** Heavy-duty vinyl, polyurethane or alloy coated fabrics are resistant to abrasion, UV, weather, hydrocarbons, marine life growth and most chemicals.
- Flotation:** Flexible, cylindrical float sections of closed cell rolled foam are electronically sealed in the boom. Flotation provides reserve buoyancy in excess of 10 times the total weight of the boom per foot.
- Ballast/Tension:** Galvanized chain sealed into the skirt and attached to the end connectors assures wave conformance and maintains bottom tension and draft.
- Options:** Options include variations in materials, float diameter, skirt length, end connectors, and ballast. "Fast-current" and "high-load" models are also available.

Contact the Sales Department for additional information and quotations.

FF497R00